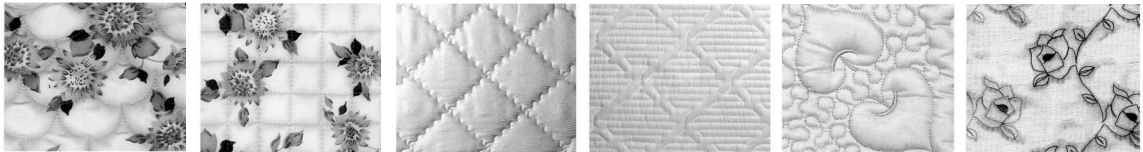
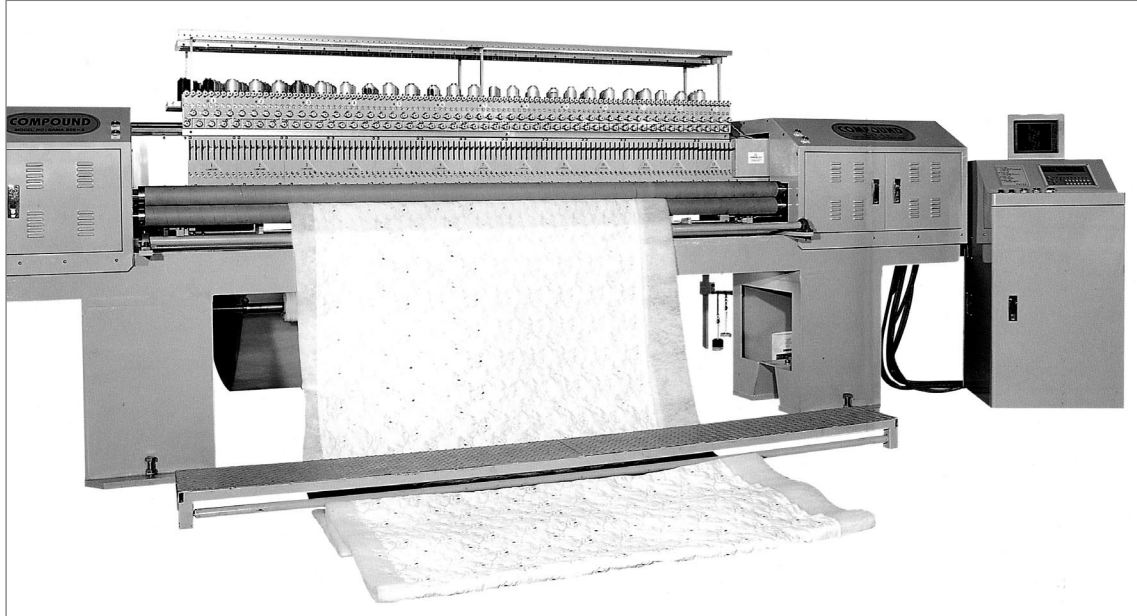


고속 가마 자수 누비기/Presser Foot Quilting Embroidery Machine



주요사양/TECHINICAL SPECIFICATION

제 어 방 식 CONTROL TYPE	동시2축제어(SIMULTANEOUS 2-AXIS CONTROL)
바느질 형식 TYPE OF STITCH	ROTARY HOOK TYPE 가마식
가 마 ROTARY HOOK	HOOK(왕가마)
땀 길 이 LENGTH	0.1~8.0mm
작업 속도 SPEED	100~950RPM
사용 바늘 NEEDLE	DP 5~19, DP 5~16
모 터 MOTOR	AC Servomotor(3EA)
전 원 POWER	220V~380V/3PHASE 50/60Hz
소비 전력 POWER CONSUMPTION	6KVA

모델별 사양/MODEL NUMBER DIMENSION

MODEL	NEEDLE	ROTARY HOOK	WORKING WIDTH	HEIGHT	WIDTH	LENGTH	WEIGHT
GAMA320×1	32	32	1600mm	1850mm	1400mm	4000mm	2000kg
GAMA480×1	48	48	2400mm	1850mm	1400mm	4500mm	2300kg
GAMA520×1	52	52	2600mm	1850mm	1400mm	4500mm	2500kg
GAMA600×1	60	60	3000mm	1850mm	1400mm	5100mm	2800kg
GAMA320×1	64	64	1600mm	1850mm	1400mm	4000mm	2300kg
GAMA480×1	96	96	2400mm	1850mm	1400mm	4500mm	2500kg
GAMA520×1	104	104	2600mm	1850mm	1400mm	4500mm	2800kg
GAMA600×1	120	120	3000mm	1850mm	1400mm	5100mm	3000kg